



CHIPDRIVE®

# SIM Card Stick

Professional Power Tool for all Mobile Phone Users



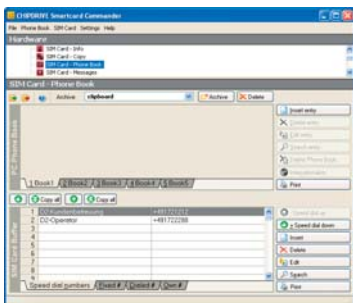
## Suitable for all types of mobile phone and GSM networks

The small and handy CHIPDRIVE® SIM Card Stick is the ideal power tool for all those who want to manage and edit the data on their SIM card on a PC. Phone numbers, text messages, and set-up data can be read, edited and stored on the SIM Card in no time. You no longer have to perform awkward operations on the mobile phone itself. You only plug the CHIPDRIVE® SIM Card Stick into a free USB port.

The CHIPDRIVE® SIM Card Stick supports all relevant security standards and facilitates multiple security applications, for example PKI (Public Key Infrastructure), digital signatures and personal identification – all in a compact mobile device.

The CHIPDRIVE® SIM Card Stick reads and writes to all ISO 7816 compliant SIM, SAM and smart cards in plug-in format (ID-000). Other smart cards can be placed into the reader, if tailored to the correct size by the user on his or her own responsibility.

## Data management and processing made simple



- With the included software **CHIPDRIVE® Smartcard Commander "GSM Edition"** you can manage and edit the data on your SIM card in no time.

The software allows you to

- edit and update
- transfer and copy
- import and export
- archive and restore
- automatically internationalize
- produce clear print-outs
- program special functions.



- The compact **CHIPDRIVE® SIM Card Stick** supports relevant security standards. It reads and writes to all ISO 7816 compliant SIM, SAM and smart cards in plug-in format (ID-000).

### System Requirements

- Microsoft® Windows® 7, Vista, XP
- Free USB port
- 25 MB free disc space

### Content

- SCT3511 smart card reader
- Software on CD-Rom

ALL INFORMATION CONTAINED IN THIS DOCUMENT IS PROVIDED "AS IS"; SCM ASSUMES NO RESPONSIBILITY FOR ITS ACCURACY AND/OR COMPLETENESS.

© SCM Microsystems, 2011 0218 all rights reserved. SCM, SCM Microsystems and CHIPDRIVE® are trademarks of SCM Microsystems, a division of Identive Group, Inc. All other trademarks are trademarks of their respective owners. In no event will SCM Microsystems be liable for damages arising directly or indirectly from any use of the information contained in this document.

The SCM Microsystems homepage can be found at [www.scmmicro.com](http://www.scmmicro.com).  
The CHIPDRIVE® homepage can be found at [www.chipdrive.net](http://www.chipdrive.net)